

► DESCRIPTIONS

The standard connector TNC is same dimension as the series BNC, but use a screw instead of a bayonet coupling.

TNC connector is used where vibration withstanding coupling is needed.

All 75 ohm TNC connectors and 50 ohm TNC connectors are intermateable without restrictions.

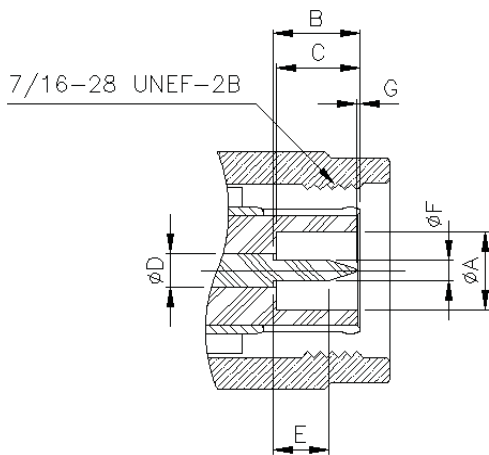
► GENERAL

- MIL-C-39012

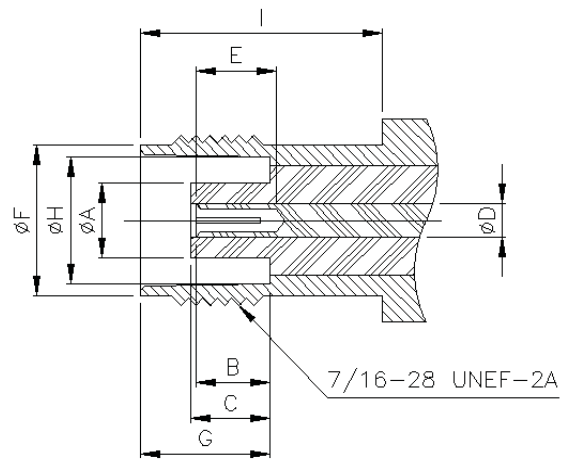


► INTERFACE DIMENSIONS

PLUG



JACK

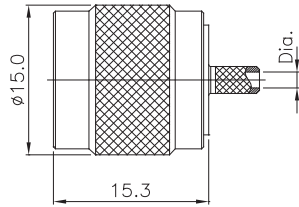


Rep.	PLUG				JACK			
	mm		inch		mm		inch	
	min.	max.	min.	max.	min.	max.	min.	max.
A	4.83		0.190			4.72		0.186
B	5.33	5.84	0.210	0.230	4.72	5.23	0.186	0.206
C	5.28	5.79	0.208	0.228	4.78	5.28	0.188	0.208
D	2.06	2.21	0.081	0.087	2.06	2.21	0.081	0.087
E	1.98		0.078	0.000	4.95		0.195	
F	1.32	1.37	0.052		9.60	9.70	0.378	
G	0.08		0.003		8.31	8.51	0.327	0.335
H					8.10	8.15	0.319	0.321
I					10.52	8.15	0.414	

► TECHNICAL DATA

REQUIREMENT	MIL-C-39012	SPECIFICATIONS	
ELECTRICAL CHARACTERISTICS			
Impedance		50 ohm	75 ohm
Frequency range		11 GHz	1.5 GHz
V.S.W.R	3-14	1.30 max.	
Dielectric withstanding voltage	3-17	1500V/50Hz	
Insertion Loss	3-27	0.8 dB max. at 9 GHz	
RF leakage	3-26	-60 dBm min.	between 2 and 3GHz
Insulation resistance	3-11	5,000 Mohm min.	
Contact resistance	3-16	Initial	After
	Center contact	1.5 mohm	2.0 mohm
	Outer contact	0.2 mohm	-
Max. Contact current (DC)		3.5 A	
Working voltage		500V/50Hz, 700V DC	
Mechanical Characteristics			
Engagement force and separation force		axial	14 N max.
Coupling nut retention force	3-25		44.5 daN
Life time	3-15		500 matings
Cable retention force	3-24	Cable clamp	40.6-180N min.,
		Cable clamp 5.0 mm	51.0-227N min.
		Cable clamp 5.0 mm	76.0-340N min.
Coupling proof torque			Not applicable
Environmental Characteristics			
Shock	3-19	MIL-STD-202 (213)	
Vibration	3-18	MIL-STD-202 (204)	
Moisture	3-21	MIL-STD-202 (106)	
Corrosion (salt spray)	3-13	MIL-STD-202 (101)	
Thermal shock		MIL-STD-202 (107)	
Temperature cycling	3-20	MIL-STD-202 (102)	
High temperature test		MIL-STD-202 (108)	
Operating temperature range		standard	-65°C + 165°C
Materials			
Bodie		Brass	
Contacts (Female)		Beryllium copper	
Contacts (Male)		Brass	
Insulators		PTFE (Teflon)	
Gaskets		Silicone rubber	
Plating			
Bodies		Nickel plated	
Center contacts		Gold Plated	

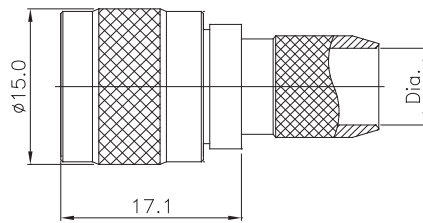
TNC



Straight Plugs

■ Crimp Type

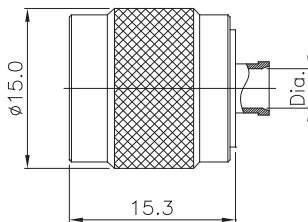
PART NO.	Dia.	CABLE
S570-001	Ø1.55 (Ø1.7)	RG 316(RG174)
S570-002	Ø3.1	RG 400, 58



Straight Plugs

■ Crimp Type

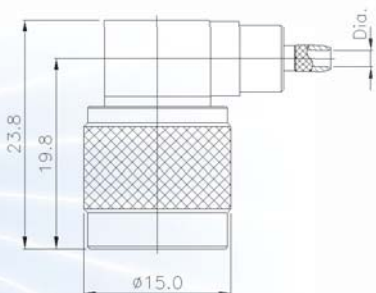
PART NO.	Dia.	CABLE
S570-022	Ø7.4	RG 213
S570-184	Ø7.6	LMR 400
S570-006	Ø9.6	RG 217



Straight Plugs

■ Direct solder type

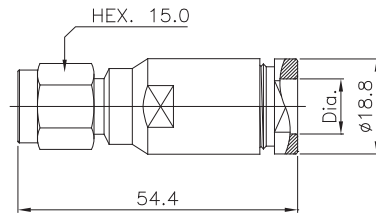
PART NO.	Dia.	CABLE
S570-056	Ø2.3	UT-085
S570-016	Ø3.7	UT-141



Right Angle Plugs

■ Crimp Type

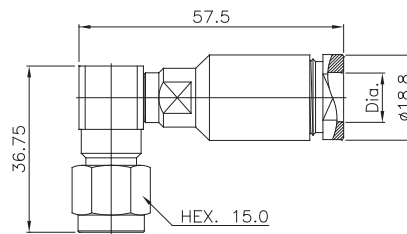
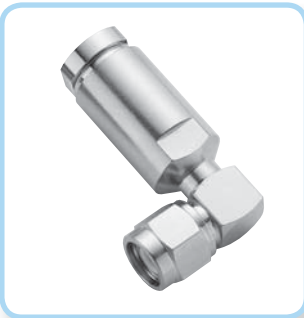
PART NO.	Dia.	CABLE
S570-007	Ø1.55 (Ø1.7)	RG 316
S570-184	Ø3.1	RG 58, 400
S570-006	Ø7.4	RG 213



Straight Plugs

■ Crimp Type

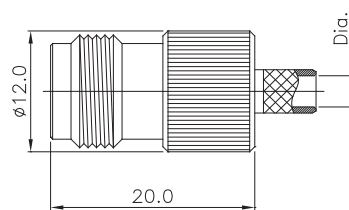
PART NO.	Dia.	CABLE
S570-2017	Ø10.9	RG 8, LMR 400
S570-2017-A	Ø11.4	RG 214



Right Angle Plugs

■ Crimp Type

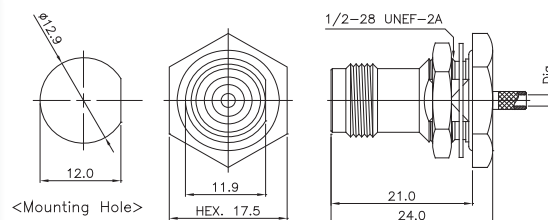
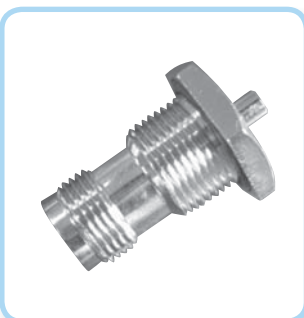
PART NO.	Dia.	CABLE
S570-2018	Ø10.9	RG 8, LMR 400
S570-2018-A	Ø11.4	RG 214



Straight Jacks

■ Crimp Type

PART NO.	Dia.	CABLE
S570-027-B	Ø1.55 (Ø1.7)	RG 316(RG174)
S570-027	Ø3.1	RG 58, 400
S570-029	Ø7.4	RG 213

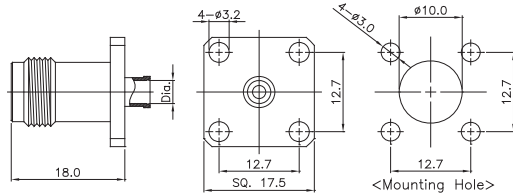
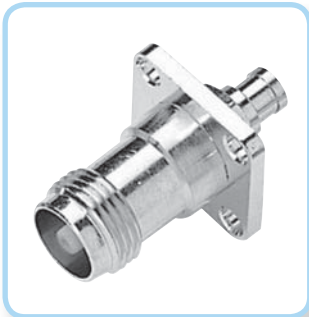


Straight Bulkhead Jacks (Seal)

■ Crimp Type

PART NO.	Dia.	CABLE
S570-190	Ø1.55 (Ø1.7)	RG 316
S570-191-A	Ø3.1	RG 58, 400

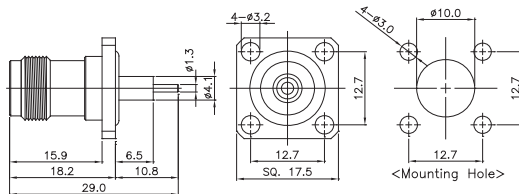
TNC



Straight 4 Hole Flange Jack

- Direct solder type

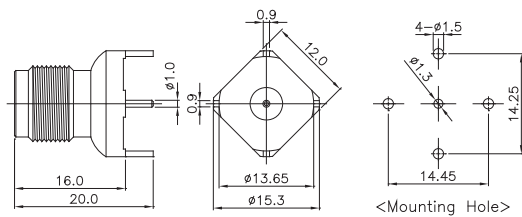
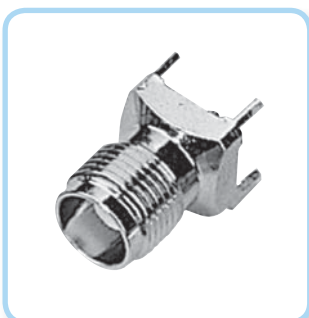
PART NO.	Dia.	CABLE
S570-069-A	ϕ 2.3	UT 085
S570-069	ϕ 3.7	UT 141



Straight 4 Hole Flange Jack (Seal)

- Panel mount type

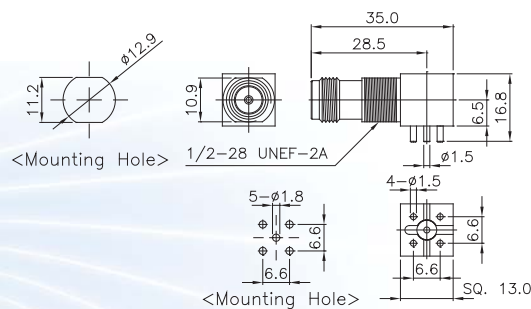
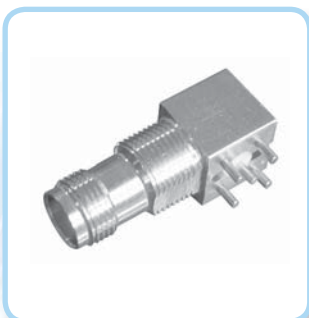
PART NO.	IMPED
S570-075F	50 Ω



Straight Jack Receptacle

- P.C.B mount

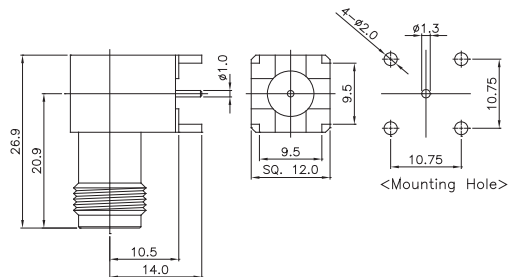
PART NO.	IMPED
S335-031	50 Ω



Right Angle Bulkhead Jack Receptacle

- P.C.B mount

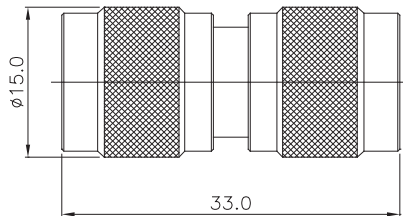
PART NO.	IMPED
S570-077	50 Ω



Right Angle Jack Receptacle

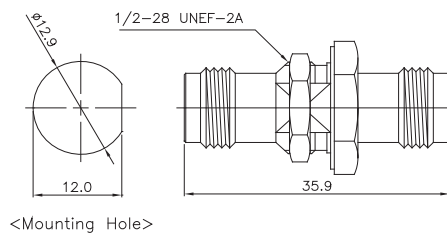
■ P.C.B mount

PART NO.	IMPED
S570-031	50 Ω



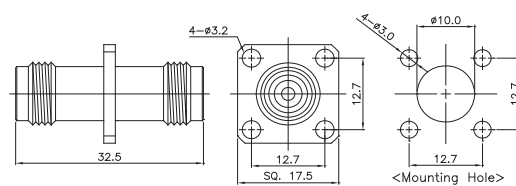
Plug to Plug Adaptor

PART NO.	IMPED
S570-077	50 Ω



Bulkhead Jack to Jack Adaptor

PART NO.	IMPED
S335-720	50 Ω



Jack to Jack 4 Hole Flange Adaptor

■ Panel Mount

PART NO.	IMPED
S570-054	50 Ω