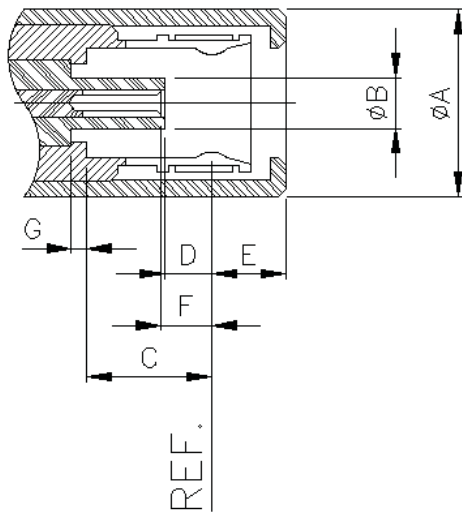
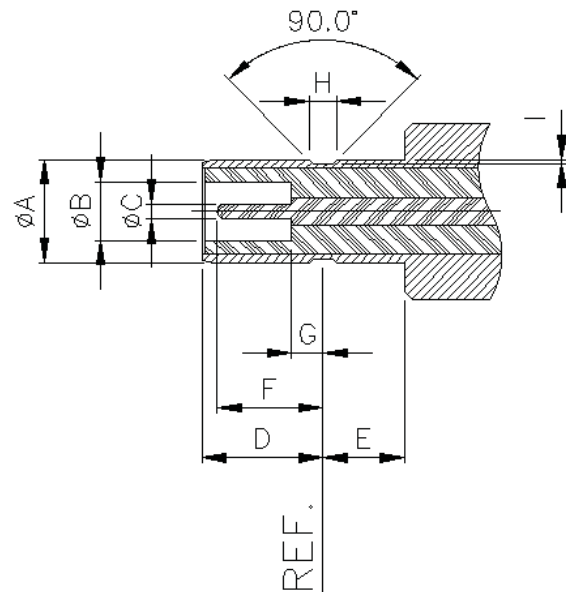


▶ INTERFACE DIMENSIONS

PLUG



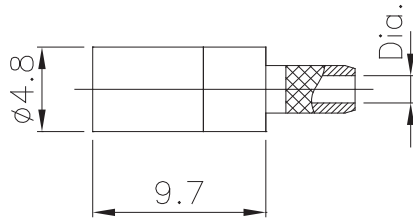
JACK



Rep.	PLUG				JACK			
	mm		inch		mm		inch	
	min.	max.	min.	max.	min.	max.	min.	max.
A		4.826		0.190		2.67		0.105
B		1.346		0.053	1.37		0.0540	
C	3.098		0.122		0.355	0.014	0.381	0.015
D	0.838		0.330		3.098		0.122	
E		1.78		0.070	1.91		0.075	
F	0.838		0.330		1.91		0.075	
G	0.000		0.000			0.838		0.033
H					0.711	0.736	0.028	0.029
I					0.05	0.152	0.002	0.006

▶ TECHNICAL DATA

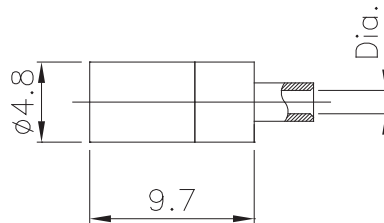
REQUIREMENT	SPECIFICATIONS
ELECTRICAL CHARACTERISTICS	
IMPEDANCE	50ohm
FREQUENCY RANGE	DC~3GHz
VOLTAGE RATING	250V rms
INSULATION RESISTANCE	1000Mohm MIN.
RF LEAKAGE	-70dB MIN.
MECHANICAL CHARACTERISTICS	
ENGAGEMENT FORCE	6lbs MAX.
DISENGAGEMENT FORCE	2lbs MIN.
DURABILITY(LIFE TIME)	500MATING
ENVIRONMENTAL CHARACTERISTICS	
TEMPERATURE RANGE	-65°C ~ +165°C
CORROSION	MIL-STD-202 METHOD 101, CONDITION B
VIBRATION	MIL-STD-202 METHOD 204
SHOCK	MIL-STD-202 METHOD 203



Straight Plugs

■ Crimp Type

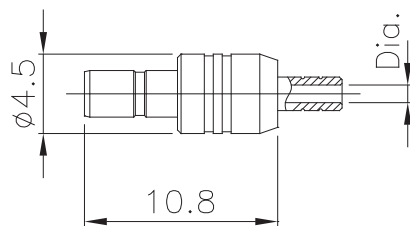
PART NO.	Dia.	CABLE
S930-001	$\phi 1.0$	RG 178
S930-002	$\phi 1.55 (\phi 1.7)$	RG 316



Straight Plugs

■ Direct solder type

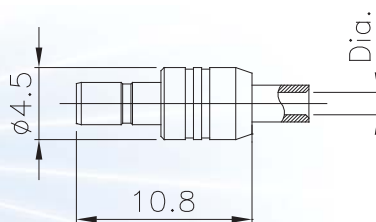
PART NO.	Dia.	CABLE
S930-003	$\phi 1.0$	UT 034
S930-004	$\phi 1.4$	UT 047
S930-005	$\phi 2.3$	UT 085, RG-405



Straight Jacks

■ Crimp Type

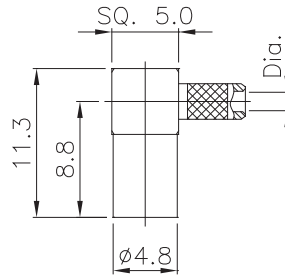
PART NO.	Dia.	CABLE
S930-006	$\phi 1.0$	RG 178
S930-007	$\phi 1.55 (\phi 1.7)$	RG 316(RG174)



Straight Jacks

■ Direct solder type

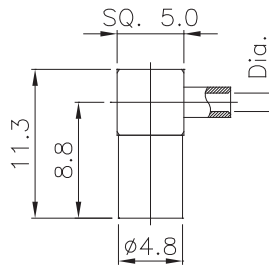
PART NO.	Dia.	CABLE
S930-008	$\phi 1.0$	UT 034
S930-009	$\phi 1.4$	UT 047
S930-010	$\phi 2.3$	UT 085



Right Angle Plugs

■ Crimp Type

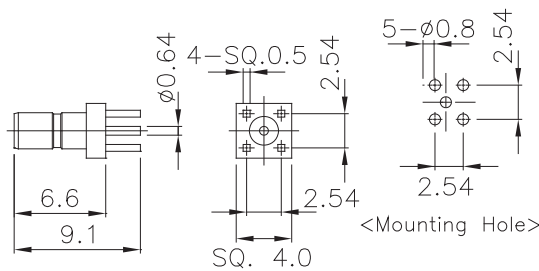
PART NO.	Dia.	CABLE
S930-011	$\phi 1.0$	RG 178
S930-012	$\phi 1.55 (\phi 1.7)$	RG 316



Right Angle Plugs

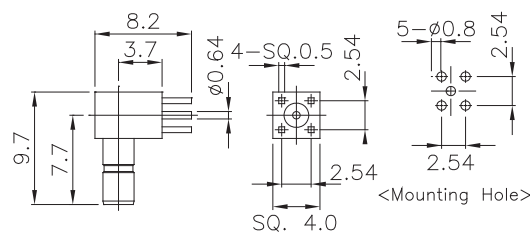
■ Direct solder type

PART NO.	Dia.	CABLE
S930-013	$\phi 1.0$	UT 034
S930-014	$\phi 1.4$	UT 047
S930-015	$\phi 2.3$	UT 085



Straight Jack for PCB

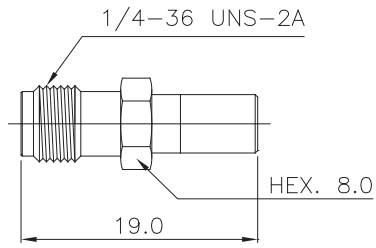
PART NO.	IMPED
S930-016	50 Ω



Right Angle Jack for PCB

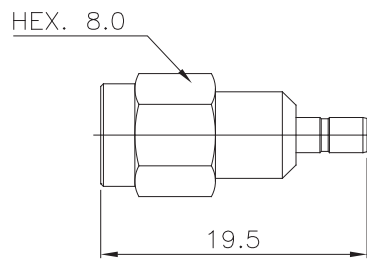
PART NO.	IMPED
S930-017	50 Ω

SSMB



SSMB Plug to SMA Jack Adaptor

PART NO.	IMPED
S930-018	50 Ω



SSMB Jack to SMA Plug Adaptor

PART NO.	IMPED
S930-021	50 Ω