

# SMZ / BT43

## ► GENERAL

- Snap-on coupling (SMZ)
- Posi-Lock Coupling (BT 43)
- 75 ohm impedance

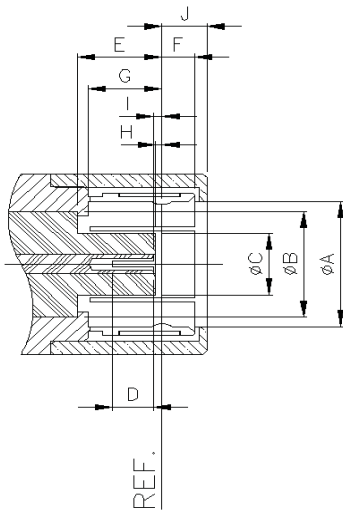


SMZ / BT43

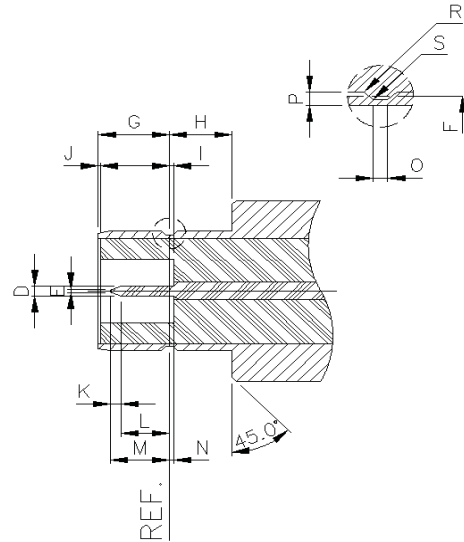
# SMZ / BT43

## ► INTERFACE DIMENSIONS

### PLUG



### JACK

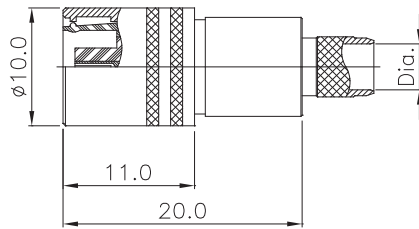


Rep.	PLUG				JACK			
	mm		inch		mm		inch	
	min.	max.	min.	max.	min.	max.	min.	max.
A	6.31	6.36	0.248	0.250	6.20	6.23	0.244	0.245
B	5.25 nom.		0.207 nom.		5.25 nom.		.207 nom.	
C	3.22	3.30	0.127	0.130	3.40	3.475	0.134	0.137
D	3.20	3.53	0.126	0.139	0.48	0.52	0.019	0.020
E	3.63	3.83	0.143	0.151	0.125	0.225	0.005	0.009
F		1.80	0.000	0.071	5.97	6.02	0.235	0.237
G	3.61	3.77	0.142	0.148	3.50	3.55	0.138	0.140
H	0.23	0.38	0.009	0.015	2.40	2.55	0.094	0.100
I	0.23	0.48	0.009	0.019	0.05	0.175	0.002	0.007
K	1.475	1.97	0.058	0.078	0.25	0.35	0.010	0.014
L					1.35		0.053	
M						2.05		0.081
N						0.18		0.007
O					0.58 nom.		.023 nom.	
P					0.15	0.25	0.006	0.010
R					0.05	0.15	0.002	0.006
S						0.13		0.005
T					0.1	0.2	0.004	0.008

## ▶ TECHNICAL DATA

REQUIREMENT	MIL-C-39012	SPECIFICATIONS
<b>ELECTRICAL CHARACTERISTICS</b>		
Impedance		75 ohm
Frequency range		6 GHz
V.S.W.R	3-14	Straight Right angle
		1.20 1.25
Working voltage	Straight	500V/50Hz
Dielectric withstanding voltage	3-17	1500V/50Hz
Insertion Loss	3-27	Straight Right angle
		: 0.5 dB max. : 0.8 dB max.
RF leakage	3-26	-55 dBm min. between 2 and 3GHz
Insulation resistance	3-11	1,000 Mohm min.
Contact resistance	3-16	Initial After
	Center contact	5.0 mohm 15.0 mohm
	Outer contact	1.0 mohm 7.5 mohm
Max. Contact current (DC)		2.0 A
<b>Mechanical and Environmental Characteristics</b>		
Engagement force		14 N
Separation force		63 N
Coupling Nut Retention Force	3-25	Not applicable
Life time	3-15	min. 500 matings
Shock	3-19	MIL-STD-202(213) 75g
Vibration	3-18	MIL-STD-202(204) 15
Moisture	3-21	MIL-STD-202(106) 10g, 10 to 500Hz
Corrosion (salt spray)	3-13	MIL-STD-202(101) Not applicable
Thermal shock	3-20	MIL-STD-202(107) 5%
Temperature cycling	3-20	MIL-STD-202(102)
High temperature test		MIL-STD-202(108)
Operating temperature range	Standard	-55°C+155°C
<b>Materials</b>		
Bodies	Brass	
Contacts(Female)	Beryllium copper	
Contacts(Male)	Brass	
Insulators	PTFE (Teflon)	
<b>Plating</b>		
Bodies	Gold Plated or passivated	
Center contacts	Gold Plated	

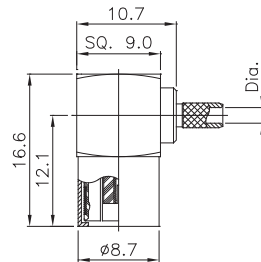
# SMZ / BT43



## Straight Plugs

### ■ Crimp Type

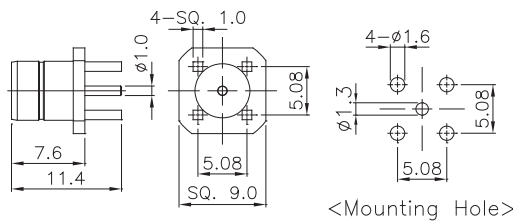
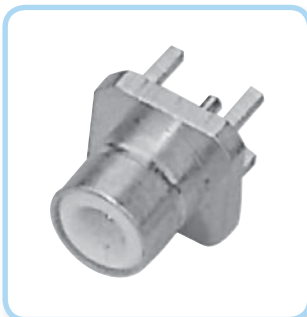
PART NO	Dia.	CABLE
S317-075	Ø1.7	RG 179
S317-075-A	Ø2.42	2.5C2V, Belden 8218
S317-075-B	Ø3.9	RG 59
REMARK	BT43 / POSI-LOCK mating	



## Right Angle Plugs

### ■ Crimp Type

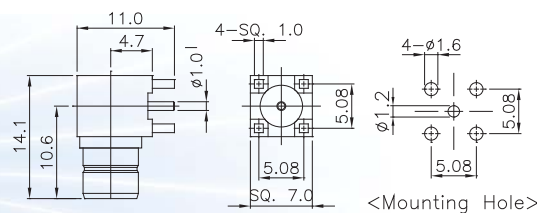
PART NO	Dia.	CABLE
S740-010	Ø1.7	RG 179
S740-011	Ø2.42	2.5C2V, Belden 8218
S740-012	Ø3.9	RG 59
REMARK	SMZ / SNAP-ON mating	



## Straight Jack for PCB

### ■ P.C.B mount

PART NO	IMPED
S740-111	50 Ω
REMARK	SMZ / BT43



## Right Angle Jack for PCB

### ■ P.C.B mount

PART NO	IMPED
S740-117-A	50 Ω
REMARK	SMZ / BT43