

► DESCRIPTIONS

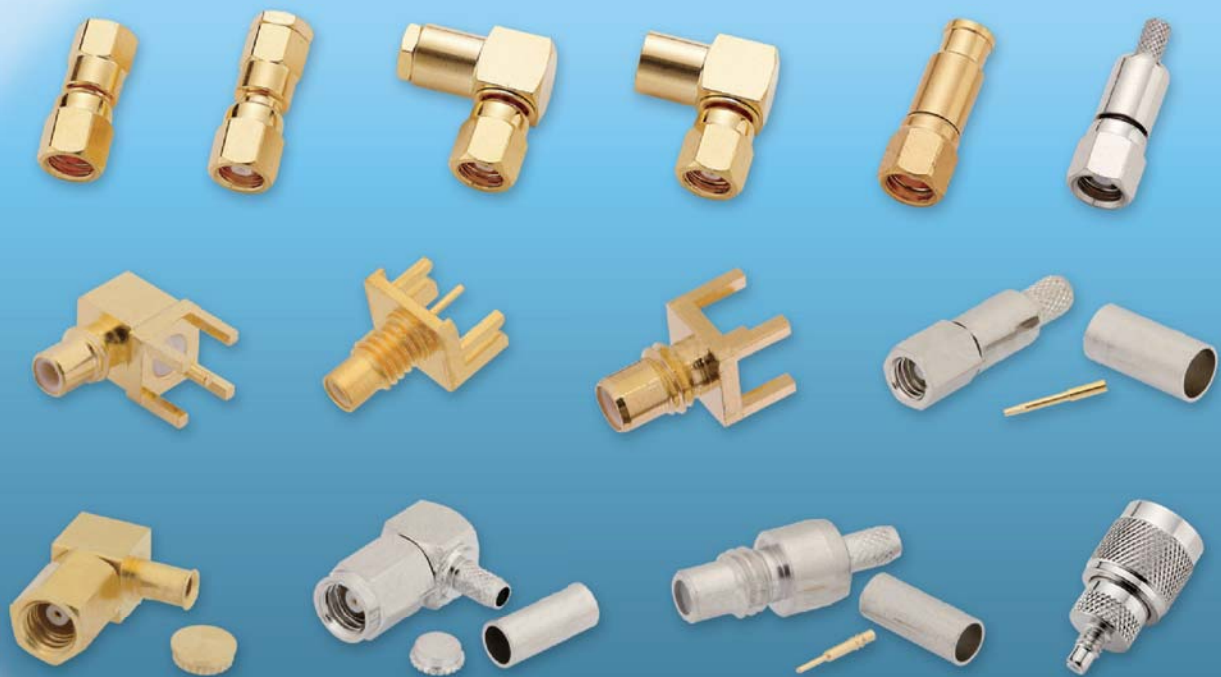
The SMC connector means Subminiature C(the third subminiature design).

The SMC design was developed in the 1960's.

SMC has threaded coupling with 10-32 threads.

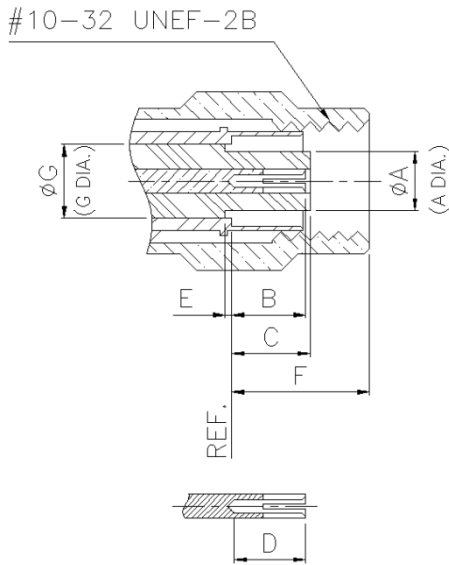
Available in 50Ω and 75Ω impedance.

Utilizes die cast components on non-critical areas to provide a low cost solution.

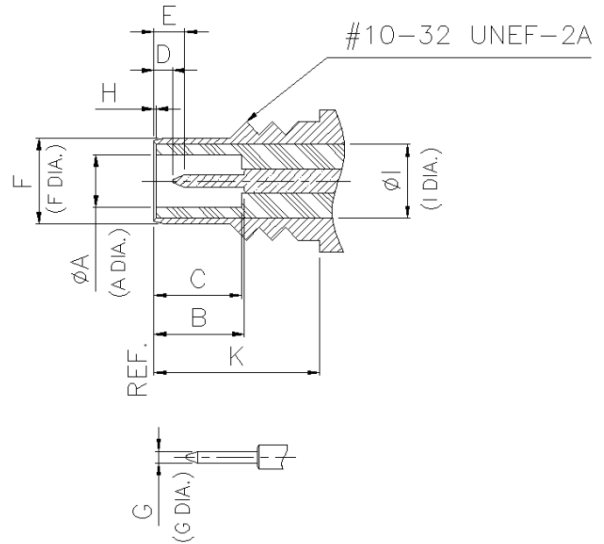


▶ INTERFACE DIMENSIONS

PLUG



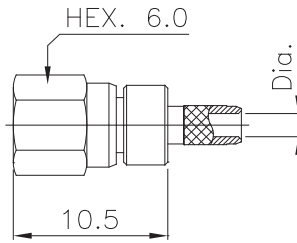
JACK



Rep.	PLUG				JACK			
	mm		inch		mm		inch	
	min.	max.	min.	max.	min.	max.	min.	max.
A		2.60		0.102	2.08		0.082	
B	2.85	3.40	0.112	0.134	3.40		0.134	
C		3.40		0.134	3.40		0.134	
D	2.79		0.110		0.61		0.024	
E	0.00					2.13		0.084
F		5.92		0.233		3.71		0.146
G	3.05 nom.		0.120 nom.		0.48	0.53	0.019	0.021
H					0.00			
I					3.05 nom.		0.12 nom.	
K					5.94		0.234	

▶ TECHNICAL DATA

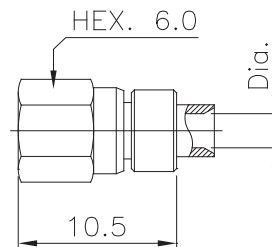
REQUIREMENT		SPECIFICATIONS	
ELECTRICAL CHARACTERISTICS			
Impedance			50Ω
Frquency range			DC~4GHz
Voltage rating			335V
Dielectric withstanding voltage			750Vrms
Contact resistance		Initial	After
	Center contact	6mΩ	8mΩ
	Outer contact	1mΩ	1.5mΩ
	Braid to body	1mΩ	N/A
Insulation resistance			1000MΩ MIN.
RF leakage			-55dB MIN. @3GHz
MECHANICAL CHARACTERISTICS			
Recommended mating torque			2~3inch-lbs
Maximum mating torque			3.6inch-lbs
Durability			500matings
MATERIALS			
Body			Brass
Male contact			Brass
Female contact			Beryllium copper
Insulator			PTFE
Ferrule			Brass
PLATING			
body			Gold
Center contact			Gold
Ferrule			Nickel or Gold
ENVIRONMENTAL			
Temperature range			-65℃ ~ +165℃
Thermal shock		MIL-STD-202, method 107, condition C	
Vibration		MIL-STD-202, method 204, condition D	
Shock		MIL-STD-202, method 213, condition C	
Corrosion		MIL-STD-202, method 101, condition B	



Straight Plugs

■ Crimp Type

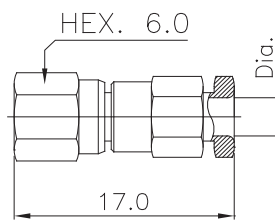
PART NO.	Dia.	CABLE
S540-001	Ø1.55(Ø1.7)	RG316(RG174)
S540-001-A	Ø3.1	RG 400, 58



Straight Plugs

■ Direct solder type

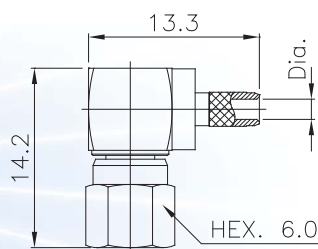
PART NO.	Dia.	CABLE
S540-002	Ø2.3	UT-085
S540-002-A	Ø3.7	UT-141



Straight Plugs

■ Clamp Type

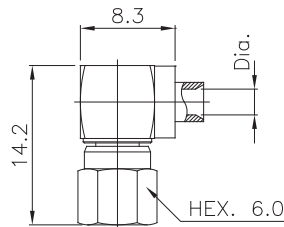
PART NO.	Dia.	CABLE
S540-1002	Ø3.0	RG-316



Right Angle Plugs

■ Crimp Type

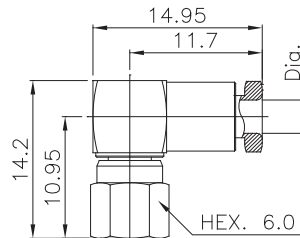
PART NO.	Dia.	CABLE
S540-054	Ø1.55(Ø1.7)	RG316(RG174)
S540-054-A	Ø3.1	RG 400, 58



Right Angle Plugs

- Direct solder type

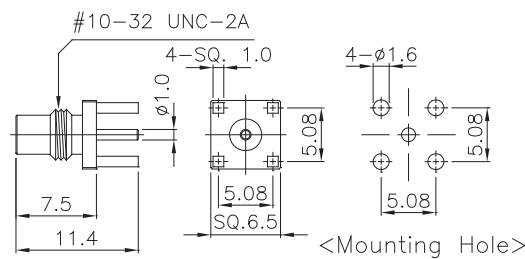
PART NO.	Dia.	CABLE
S540-018	Ø2.3	UT-085
S540-019	Ø3.7	UT-141



Right Angle Plugs

- Clamp Type

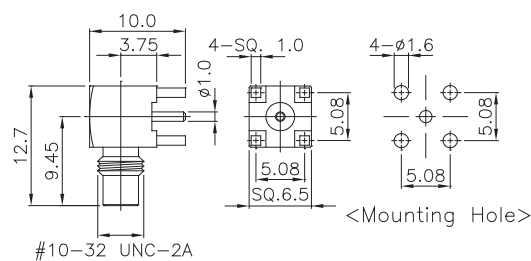
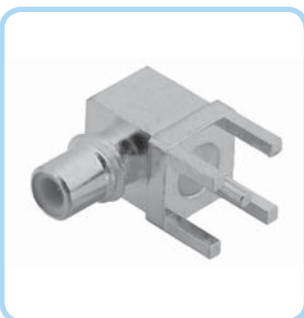
PART NO.	Dia.	CABLE
S540-1001	Ø2.0	RG-178
S540-1000	Ø3.0	RG-316



Straight Jack Receptacle

- P.C.B mount

PART NO.	IMPED
S540-1005	50 Ω



Right Angle Jack Receptacle

- P.C.B mount

PART NO.	IMPED
S540-1006	50 Ω