

► DESCRIPTIONS

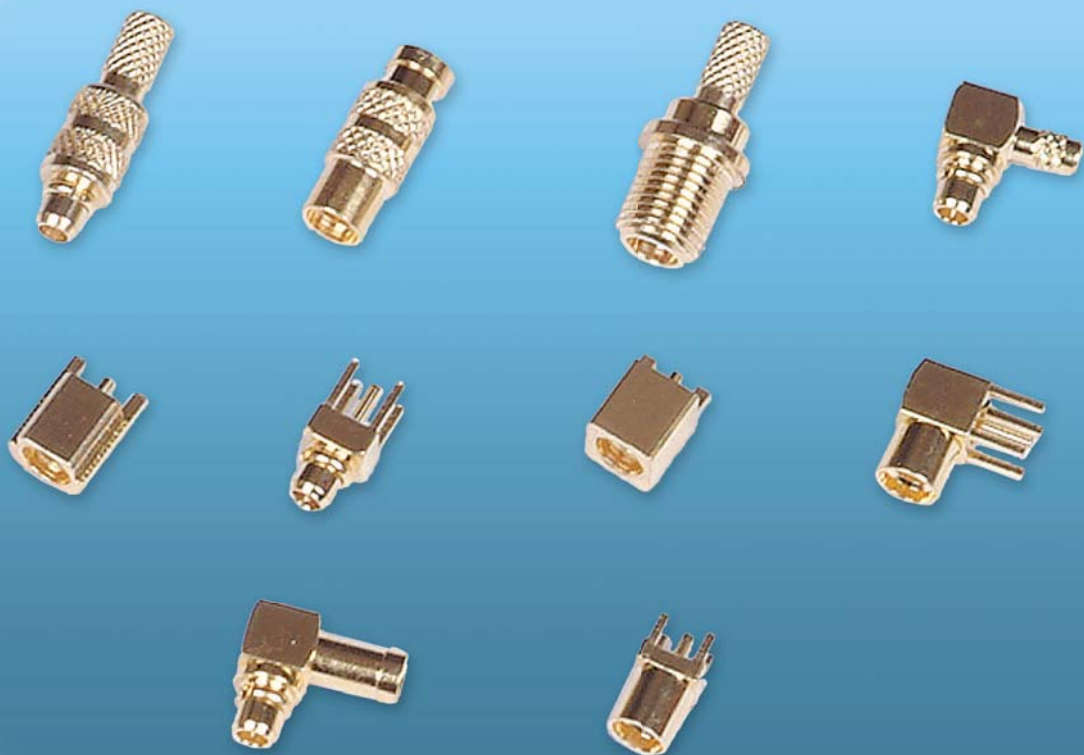
MMCX connectors are designed for frequency ranges from DC up to 6 GHz and for applications where smallest dimensions have to be achieved.

The reliable “snap-on” coupling mechanism ensures that the electrical parameters are consistently reproduced.

MMCX series provide a low RF leakage due to its non-slotted outer contact.

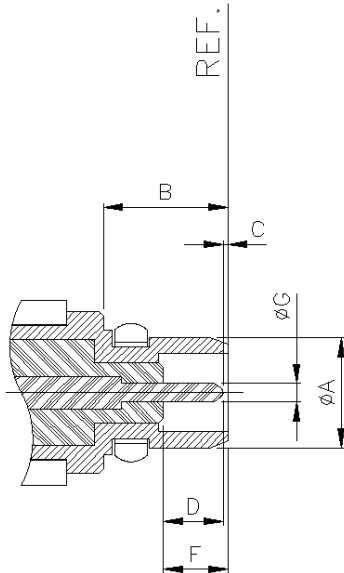
► GENERAL

- CECC 22000

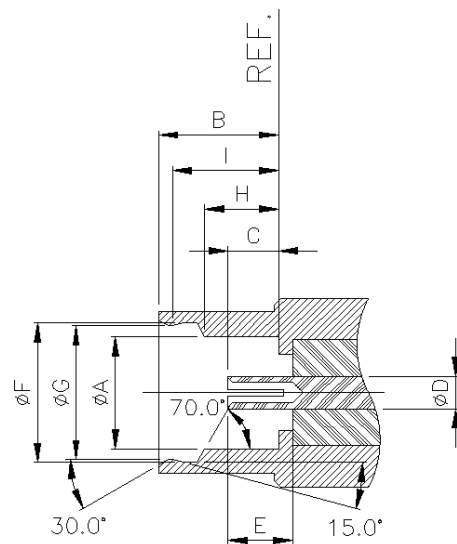


► INTERFACE DIMENSIONS

PLUG



JACK

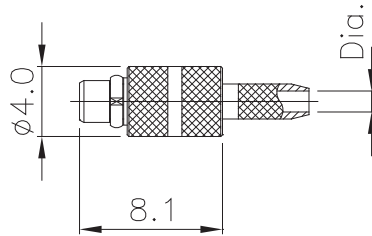


Rep.	PLUG				JACK			
	mm		inch		mm		inch	
	min.	max.	min.	max.	min.	max.	min.	max.
A		2.40	0.000	0.094	2.41		0.095	0.000
B	2.70		0.106	0.000		2.65		0.104
C		0.25	0.000	0.010	0.90	1.20	0.035	0.047
D	1.23		0.048		0.70 nom.		0.028 nom.	
E	1.58	1.62	0.062	0.064	1.40		0.055	0.000
F	1.23		0.048	0.000	3.00	3.04	0.118	0.120
G	0.38	0.42	0.015	0.017	2.88	2.92	0.113	0.115
H		0.20		0.008	1.57	1.63	0.062	0.064
I					2.26	2.34	0.089	0.092

▶ TECHNICAL DATA

REQUIREMENT	SPECIFICATIONS	
ELECTRICAL		
Normal Impedance		50Ω
Frequency range		DC~6GHz
V.S.W.R		
	Straight	1.3 Max., DC~6GHz
	Right angle	1.3 Max., DC~3GHz
Insertion Loss		$0.07\sqrt{f(GHz)} dB$
Contact Resistance		
	Inner Conductor	5mΩ max.
	Outer Conductor	2.5mΩ max.
Insulation Resistance		3000mΩmin.
Mechanical		
Body : Force to engage		3.4lbs max / 15N
Force to disengage		1.4lbs min / 6N
Connector Durability		500mating
Environmental		
Vibration		MIL-STD-202, method 204, test condition D
Thermal Shock		MIL-STD-202, method 107, test condition C
Corrosion(Salt spray)		MIL-STD-202, method 101, test condition B
Moisture Resistance		MIL-STD-202, method 106
Material		
Body		Brass
Center Contact : Male		Brass
Female		Beryllium Copper
C-ring		Beryllium Copper
Insulator		PTFE Teflon
Finish		
Body		Gold
Center Contact		Gold

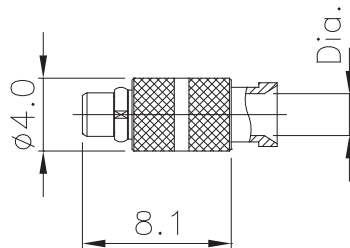
MMCX



Straight Plugs

■ Crimp Type

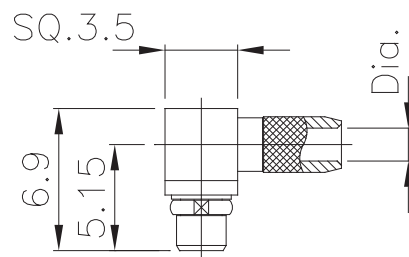
PART NO	Dia.	CABLE
S396-231-A	Ø1.0	RG 178
S396-231	Ø1.55 (Ø1.7)	RG 316(RG174)



Straight Plugs

■ Direct Solder type

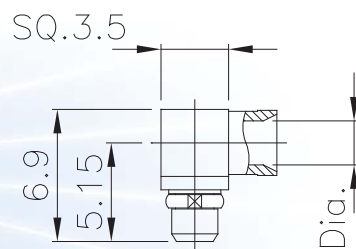
PART NO	Dia.	CABLE
S396-235	Ø1.3	UT 047
S396-234	Ø2.3	UT 085



Right Angle Plugs

■ Crimp Type

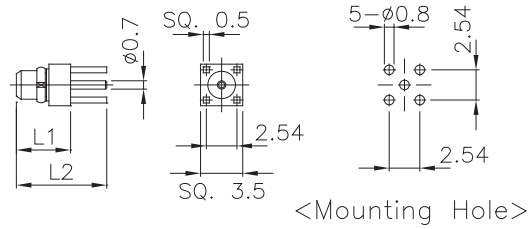
PART NO	Dia.	CABLE
S396-311	Ø1.0	RG 178
S396-310	Ø1.55 (Ø1.7)	RG 316



Right Angle Plugs

■ Direct solder type

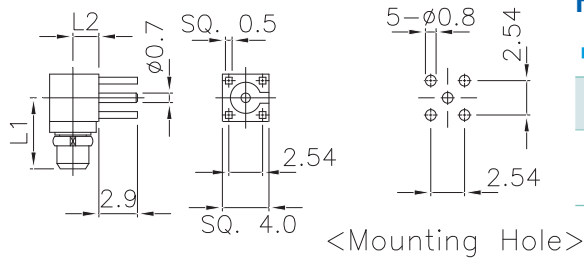
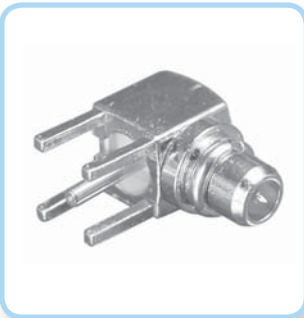
PART NO	Dia.	CABLE
S396-313	Ø1.3	UT 047
S396-312	Ø2.3	UT 085



Straight Plug for PCB

■ P.C.B mount

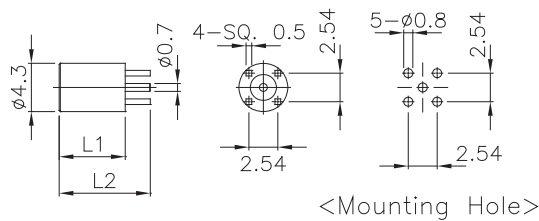
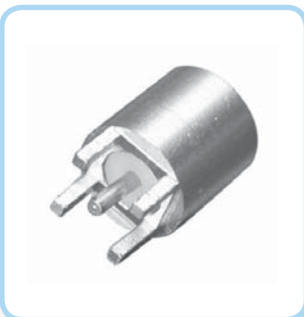
PART NO	L1	L2
S396-239	4.5mm	7.5mm
S396-239-A	5.3mm	8.3mm



Right Angle Plug for PCB

■ P.C.B mount

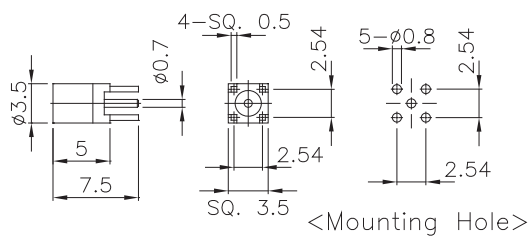
PART NO	L1	L2
S396-238	5.25mm	1.95mm



Straight Jack for PCB

■ P.C.B mount

PART NO	L1	L2
S396-120-01	5.8 mm	8.0 mm

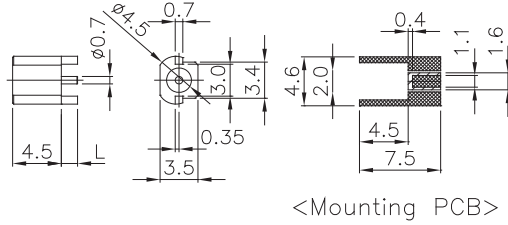


Straight Jack for PCB

■ P.C.B mount

PART NO	IMPED
S396-121	50 Ω

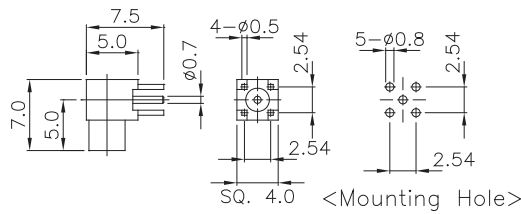
MMCX



Straight Jack for PCB

- P.C.B end launch type

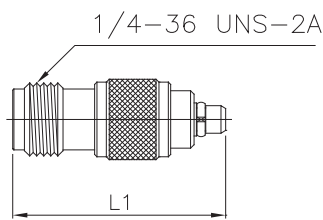
PART NO	L
S396-123	1.5mm
S396-124	3.0mm



Right Angle Jack for PCB

- P.C.B mount

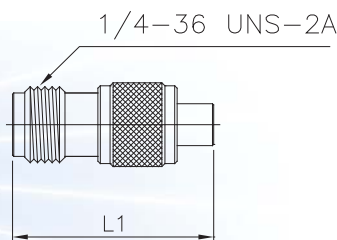
PART NO	IMPED
S396-2019	50 Ω



Adaptor

- SMA female to MMCX male

PART NO.	L1
S500-049	18.2mm



Adaptor

- SMA female to MMCX female

PART NO.	L1
S500-052	16.5mm