

## ► DESCRIPTIONS

MHV connectors are coaxial miniature high voltage connectors with 5kVrms test voltage(mated pair). MHV connectors have a working voltage up to 1.6kVrms in mated condition and are suitable for applications up to 300MHz.

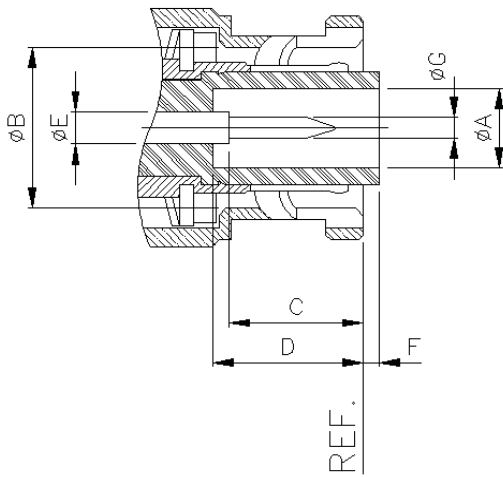
MHV connectors are of similar design to BNC connectors but the insulators protrude over the outer contacts to give a degree of contact-voltage proof when unmated.

However, if a high degree of protection in the unmated condition is required, use of series SHV is recommended.

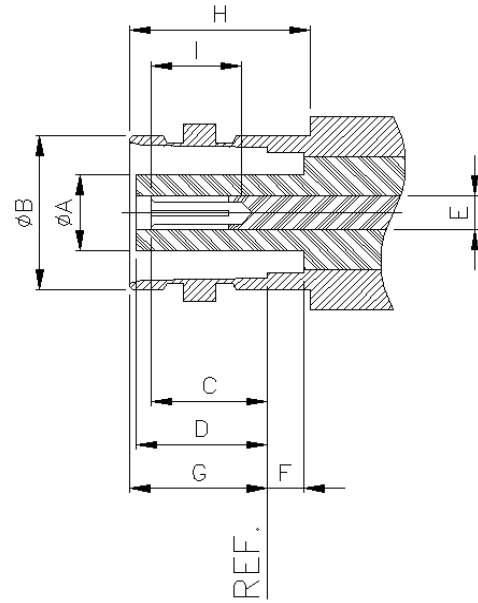


## ▶ INTERFACE DIMENSIONS

### PLUG



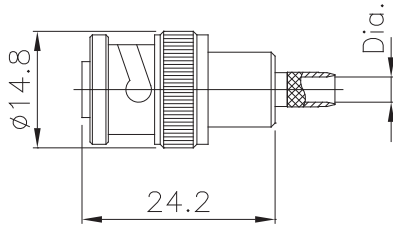
### JACK



Rep.	PLUG				JACK			
	mm		inch		mm		inch	
	min.	max.	min.	max.	min.	max.	min.	max.
A	4.83		0.190		4.72		0.186	
B	9.78	9.91	0.385	0.390	9.60	9.70	0.378	0.382
C	7.18		0.283		7.11		0.280	
D	8.10		0.319		8.05		0.317	
E		2.31		0.091	2.06	2.31	0.081	0.091
F		2.18		0.086	2.18		0.086	
G	1.32	1.37	0.052	0.054	8.31	8.51	0.327	0.335
H					10.52		0.414	
I					6.86		0.270	

## ▶ TECHNICAL DATA

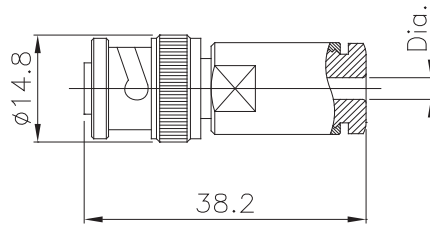
REQUIREMENT	SPECIFICATIONS	
<b>ELECTRICAL CHARACTERISTICS</b>		
Impedance	50ohm	
Frequency range	DC~300MHz	
Dielectric withstanding voltage	5kVrms, 50Hz(depending on cable)	
Working voltage	1.6kVrms, 50Hz(depending on cable)	
Insulation resistance	106 Mohm	
Contact resistance		
	Center contact	2mohm MAX.
	Outer contact	1mohm MAX.
Current rating		10A MAX.
<b>MECHANICAL CHARACTERISTICS</b>		
Coupling torque		7Ncm ~ 28Ncm
Coupling nut retension force		450N MIN.
Contact captivation		15N MIN.
Durability		500MATING
<b>ENVIRONMENTAL CHARACTERISTICS</b>		
Temperature range		-65°C ~+165°C
Thermal shock		MIL-STD-202, METHOD 107, CONDITION B
Moisture resistance		MIL-STD-202, METHOD 106
Corrosion(salt spray test)		MIL-STD-202, METHOD 101, CONDITION B
Vibration		MIL-STD-202, METHOD 204, CONDITION B
<b>MATERIALS</b>		
Body		Brass
Male contact		Brass
Female contact		Beryllium copper
Insulator		PTFE
Crimp ferrule		Brass
<b>FINISH</b>		
Body		Nickel plate
Male contact		Gold plate
Female contact		Nickel plate
Crimp ferrule		Nickel plate



## Straight Plugs

### ■ Crimp Type

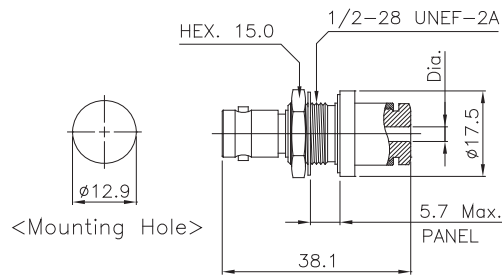
PART NO	Dia.	CABLE
S160-001	Ø1.55 (Ø1.7)	RG 316
S160-002	Ø3.1	RG 58
S160-003	Ø7.6	RG 213



## Straight Plugs

### ■ Clamp Type

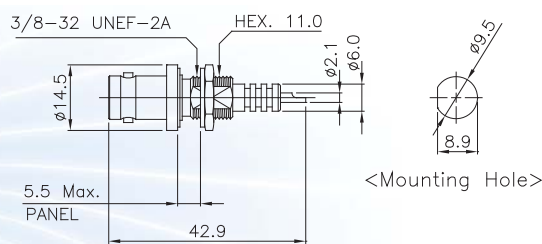
PART NO	Dia.	CABLE
S160-004	Ø3.0	RG 316
S160-2000	Ø5.6	RG 58
S160-006	Ø11.0	RG 213



## Straight Bulkhead Jacks

### ■ Clamp Type

PART NO	Dia.	CABLE
S160-007	Ø3.0	RG 316
S160-008	Ø5.6	RG 58
S160-009	Ø11.0	RG 213



## Front Mount Bulkhead Jack

### ■ Solder cup terminal

PART NO	IMPED
S160-010	50 Ω