

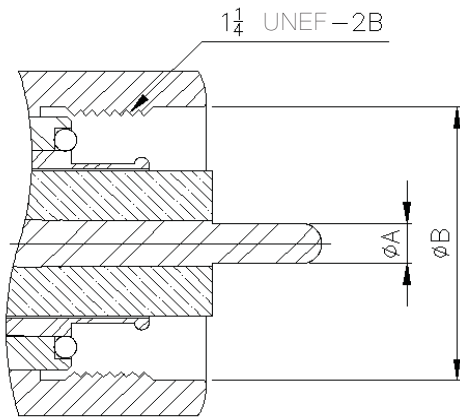
► DESCRIPTIONS

LC connectors are high-voltage applications from DC to 1 GHz. These weatherproof, 50-ohm connectors are intended for use with high-power 0.500 to 0.730 inches diameter cables and are designed with dependable, screw-type, cable-clamping mechanisms. Versions are available rated to 10,000 VRMS. The LC connectors are constructed with extended PTFE dielectric material and nickel, silver, or trialloy-plated brass bodies. Beryllium-copper male outer contacts and phosphor-bronze male outer contacts are plated with silver, gold, or trialloy to minimize resistance and increase power-handling capability. All LC connectors will mate with connectors and adapters that are equipped with MIL-STD-348 LC interfaces.

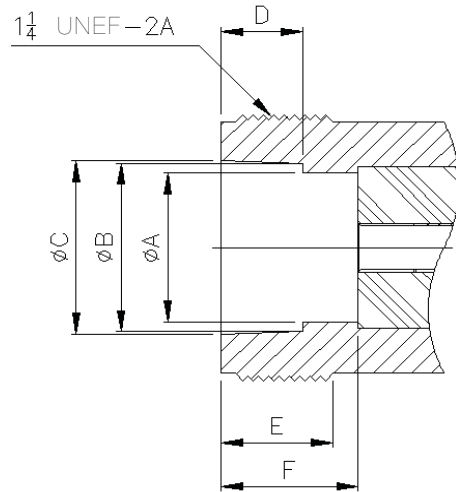


▶ INTERFACE DIMENSIONS

PLUG



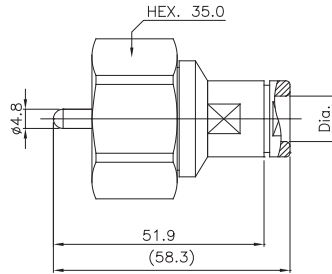
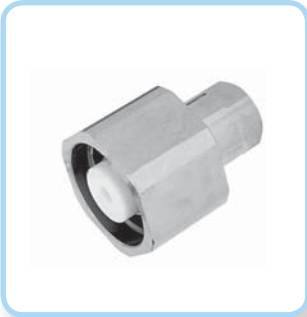
JACK



Rep.	PLUG				JACK			
	mm		inch		mm		inch	
	min.	max.	min.	max.	min.	max.	min.	max.
A	4.78	4.83	0.188	0.190	17.60	17.70	0.693	0.697
B	32.41	32.66	1.276	1.286	20.02	20.07	0.788	0.790
C					20.47	20.68	0.806	0.814
D					9.47	9.58	0.373	0.377
E					12.32	13.08	0.485	0.515
F					15.82	15.93	0.623	0.627

► TECHNICAL DATA

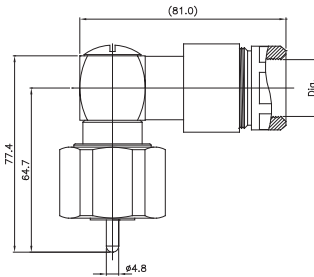
REQUIREMENT	SPECIFICATIONS
ELECTRICAL CHARACTERISTICS	
Impedance	50Ω
Frquency range	DC~1GHz
Voltage rating	5000Vrms
Dielectric withstanding voltage	5000Vrms at 60Hz
MECHANICAL CHARACTERISTICS	
MATERIALS	
Body	Brass
Male contact	Brass
Female contact	Beryllium copper
Insulator	PTFE
PLATING	
body	Nickel, Silver or Trialloy
Center contact	Gold or Silver
ENVIRONMENTAL	
Temperature range	-65°C ~ +165°C



Straight Plugs

- Clamp Type

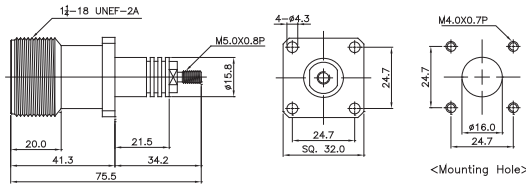
PART NO	Dia.	CABLE
S270-001	Ø11.0	RG 214, 393



Right Angle Plugs

- Clamp Type

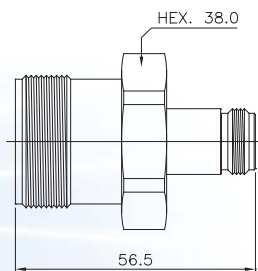
PART NO	Dia.	CABLE
S270-2003	Ø22.4	RG 218



Straight 4 Hole Flange Jack

- Solder Cup Terminal

PART NO	IMPED
S270-002	50 Ω



Adaptor

- LC Female to N Female

PART NO	IMPED
S500-2042	50 Ω