

## ► DESCRIPTIONS

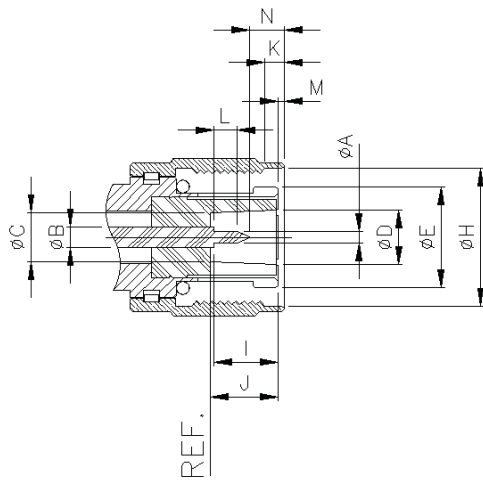
HN connectors are medium size weatherproof units designed for high voltage applications.

HN connectors feature captivated contact design which prevents contact recession under temperature extremes and mechanical stresses. The coupling mechanism features a 3/4-20 thread interface."

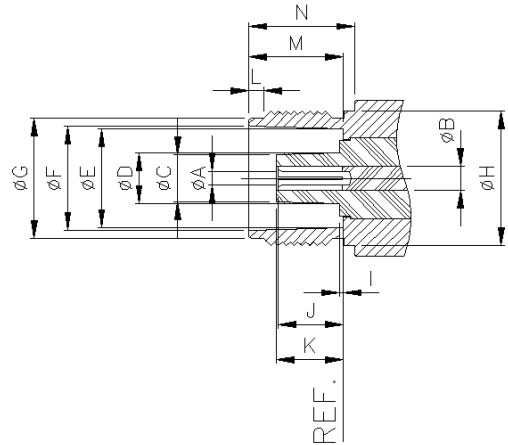


## ▶ INTERFACE DIMENSIONS

### PLUG



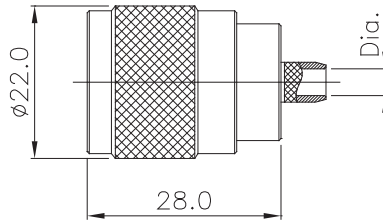
### JACK



Rep.	PLUG				JACK			
	mm		inch		mm		inch	
	min.	max.	min.	max.	min.	max.	min.	max.
A	1.57	1.68	0.062	0.066	1.57	1.68	0.062	0.066
B	0.00	3.35		0.132	0.00	3.35		0.132
C	6.68	0.00	0.263		0.00	6.81		0.268
D	0.00	7.34		0.289	0.00	7.47		0.294
E	10.97	13.92	0.432	0.548	13.92	14.05	0.548	0.553
F	0.00	0.00			14.50	14.68	0.571	0.578
G	0.00	0.00			16.81	17.35	0.662	0.683
H	19.30	0.00	0.760		0.00	19.18		0.755
I	9.09	9.86	0.358	0.388	0.00	1.27		0.050
J	9.35	0.00	0.368		8.33	9.09	0.328	0.358
K	2.54	0.00	0.100		0.00	9.35		0.368
L	3.05	0.00	0.120		1.96	2.21	0.077	0.087
M	0.00	1.47		0.058	13.11	13.26	0.516	0.522
N	3.51	0.00	0.138		14.99	0.00	0.590	

## ► TECHNICAL DATA

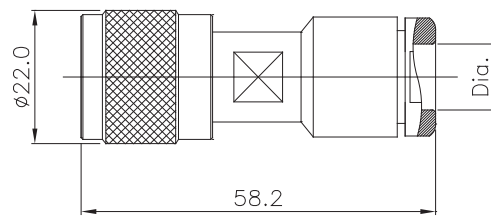
REQUIREMENT	SPECIFICATIONS
<b>ELECTRICAL CHARACTERISTICS</b>	
Impedance	50Ω
Frequency range	DC ~ 4GHz
Voltage rating	1500Vpeak
Dielectric withstanding voltage	5000Vrms
<b>MECHANICAL CHARACTERISTICS</b>	
Mating	3/4-20 thread coupling
<b>ENVIRONMENTAL CHARACTERISTICS</b>	
Temperature range	-65°C ~ +165°C
<b>MATERIALS</b>	
Body and other metal parts	Brass
Insulator	PTFE
Gasket	Silicone rubber
Male contact	Brass
Female contact	Beryllium copper
<b>FINISH</b>	
Body and other metal parts	Nickel plate
Center contact	Gold plate



## Straight Plugs

### ■ Crimp Type

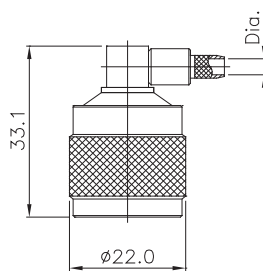
PART NO	Dia.	CABLE
S253-001	Ø3.1	RG 58
S253-002		RG400, RG142, RG223



## Straight Plugs

### ■ Clamp Type

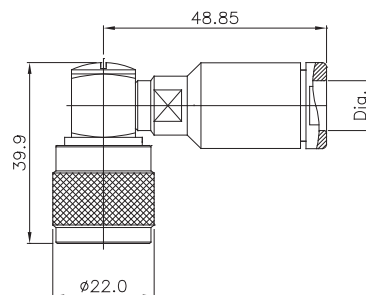
PART NO	Dia.	CABLE
S253-003	Ø5.5	RG58, RG400
S253-004	Ø11.0	RG213, RG214, RG8, RG393
S253-005	Ø14.6	RG217, RG14



## Right Angle Plugs

### ■ Crimp Type

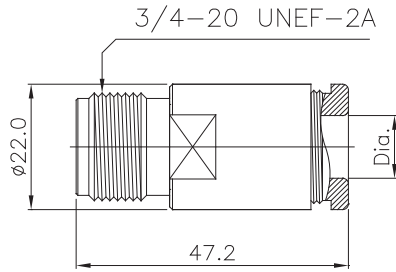
PART NO	Dia.	CABLE
S253-006	Ø3.1	RG 58
S253-007		RG400, RG142, RG223



## Right Angle Plugs

### ■ Clamp Type

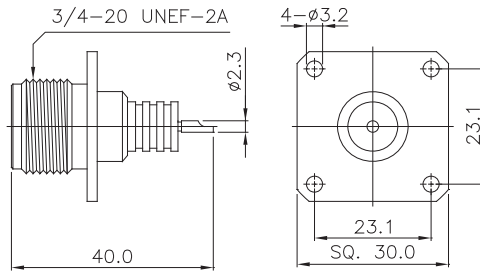
PART NO	Dia.	CABLE
S253-008	Ø5.5	RG58, RG400
S253-009	Ø11.0	RG213, RG214, RG8
S253-010	Ø14.6	RG217, RG14



## Straight Jacks

### ■ Clamp Type

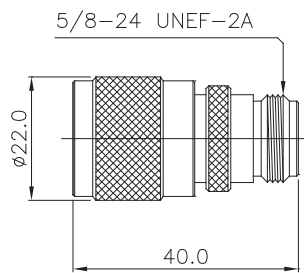
PART NO	Dia.	CABLE
S253-011	ø11.0	RG213, RG214, RG8



## Straight 4H Flange Jack

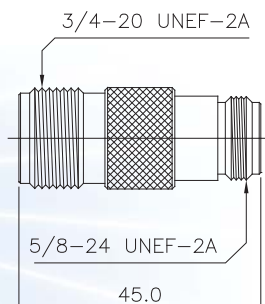
### ■ Solder cup terminal

PART NO	IMPEDANCE
S253-012	50 Ω



## HN Plug to N Jack Adaptor

PART NO	IMPEDANCE
S500-2500	50 Ω



## HN Jack to N Jack Adaptor

PART NO	IMPEDANCE
S500-2501	50 Ω