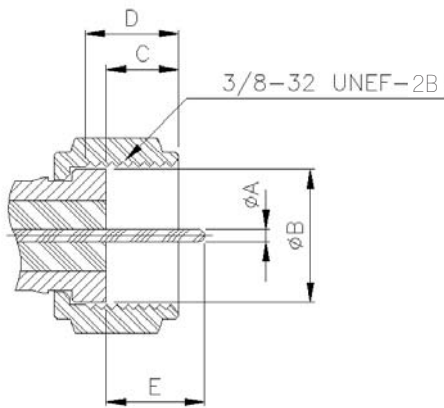


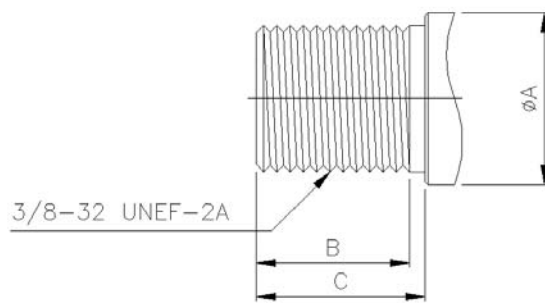


## ▶ INTERFACE DIMENSIONS

### PLUG



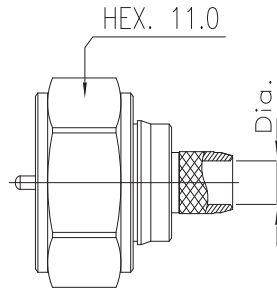
### JACK



Rep.	PLUG				JACK			
	mm		inch		mm		inch	
	min.	max.	min.	max.	min.	max.	min.	max.
A	0.56	1.07	0.022	0.042	9.40	11.05	0.370	0.435
B	7.11		0.280	0.000	8.26	8.89	0.325	0.350
C	4.45	6.10	0.175	0.240	9.65		0.380	
D	5.00	7.00	0.197	0.276				
E	6.35	9.53	0.250	0.375				

## ► TECHNICAL DATA

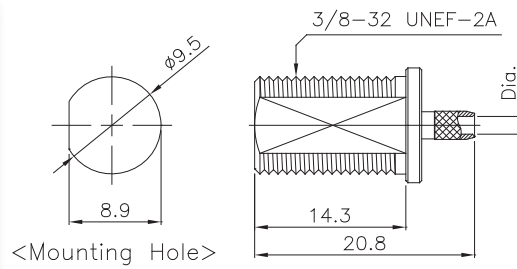
REQUIREMENT		SPECIFICATIONS
<b>Electrical</b>		
Normal Impedance		75Ω
Frequency Range		DC~1GHz
V.S.W.R		1.5 Max.
Dielectric withstanding voltage		1000Vrms, 50Hz
Working voltage	Connector for flexible cable	250Vrms, 50Hz Max.
	Connector for semi-rigid cable	335Vrms, 50Hz Max.
Contact Resistance		3mΩMax.
Insulation Resistance		5000mΩMin.
<b>Mechanical</b>		
Cable retention		40lbs Min.
Connector Durability		500cycle
<b>Material</b>		
Body		Brass
Center Contacts	Male	Brass
	Female	Beryllium Copper
Insulator		PTFE Teflon
Gasket		Silicon Rubber
<b>Plating</b>		
Body		Nickel Plated
Center Contact		Gold Plated



## Straight Plugs

### ■ Crimp Type

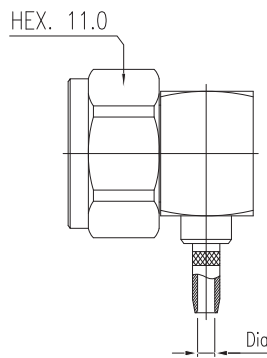
PART NO	Dia.	CABLE
S810-2005	Ø1.7	RG 179
S810-2013	Ø3.9	RG 59
S810-003-C	Ø2.5	1365



## Straight Bulkhead Jack

### ■ Crimp Type

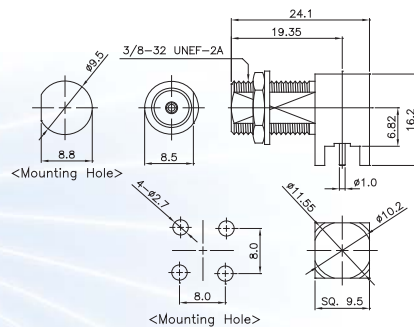
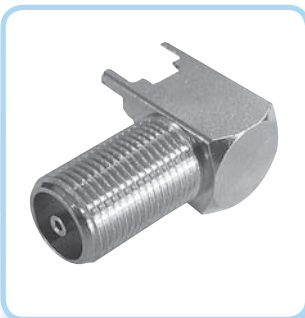
PART NO	Dia.	CABLE
S810-2015	Ø1.7	RG 179
S810-2015-A	Ø3.9	RG 59
S810-2015-B	Ø2.5	1365



## Right Angle Plugs

### ■ Crimp Type

PART NO	Dia.	CABLE
S810-030	Ø1.7	RG 179
S810-008-A	Ø3.2	3C2V
S810-008-B	Ø3.9	RG 59
S810-008-C	Ø2.5	1365



## Right Angle Bulkhead Jack for PCB

### ■ PCB Mount

PART NO	IMPED
S810-2016	75 Ω

