

## ► DESCRIPTIONS

DIN 7/16 connectors Mechanically very rugged coaxial connectors with screw lock.

They have a characteristic impedance of 50ohm, applicable with excellent electrical properties up to 7.5GHz

DIN 7/16 connectors are designed for the transmission of medium to high power in transmitting stations and low loss transmission of received signals such as in mobile phone base stations are typical applications.

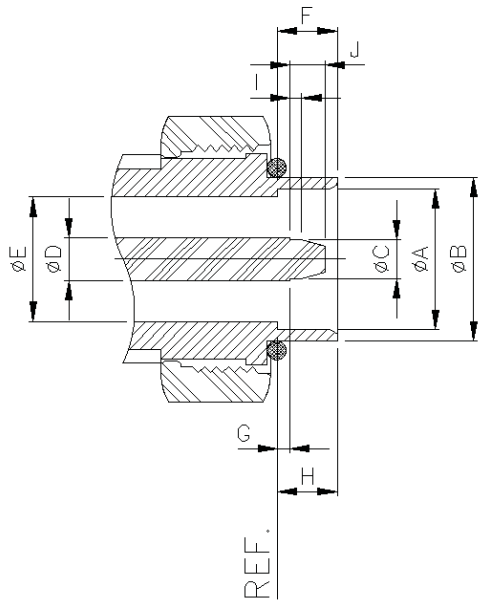
Low intermodulation products and water-proof types are also available for these purposes.



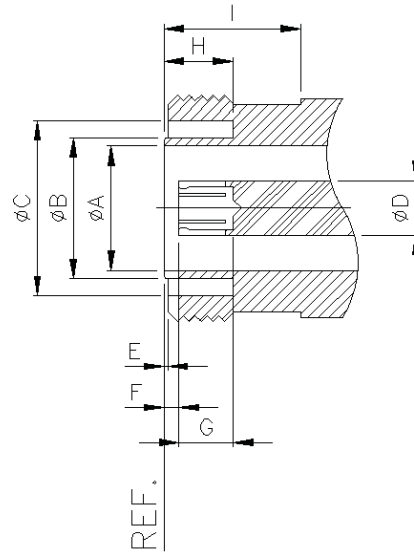
# DIN 7/16

## ► INTERFACE DIMENSIONS

### PLUG



### JACK

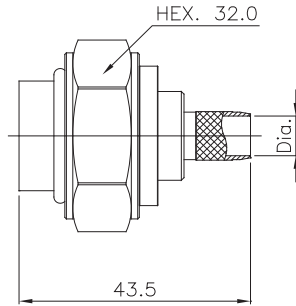


Rep.	PLUG				JACK			
	mm		inch		mm		inch	
	min.	max.	min.	max.	min.	max.	min.	max.
A	18.03	18.21	0.710	0.717	15.85	16.25	0.624	0.640
B	20.06	20.59	21.400	0.102		18.00		0.709
C	4.96	5.04	0.195	0.198	22.10	22.90	0.870	0.902
D	7.00 nom.		0.275 nom.		7.00 nom.		0.275 nom.	
E	15.85	16.25	0.624	0.640	0.50	0.70	0.020	0.028
F	7.00	8.00	0.276	0.315	1.77	2.07	0.070	0.081
G	1.47	1.77	0.058	0.070	5.00		0.197	
H	7.00	9.00	0.276	0.354	8.10		0.319	
I		4.50		0.177	10.00		0.394	
J	7.00	9.00	0.276	0.354				

## ► TECHNICAL DATA

REQUIREMENT		SPECIFICATIONS
<b>Electrical</b>		
Impedance		50Ω
Frequency Range		DC~7.5GHz
RF Leakage(at 1GHz)		128dB Min.
Dielectric withstanding voltage		4.0kVrms, 50Hz
Working voltage	Combination system	2.0kVrms, 50Hz
	Combination system	2.7kVrms, 50Hz Max.
Insulation Resistance		1.0kVrms, 50Hz Max.
Contact Resistance		10GΩ
	Center contacts	0.4mΩ Max.
	Outer contacts	1.5mΩ Max.
<b>Mechanical</b>		
Coupling nut torque	recommended	25~30N.m/221~260in.lbs
	proof torque	35N.m/310in.lbs
Coupling nut retention force		1000N/225lbs Min.
Contact captivation		200N/45lbs Min.
Durability(matings)		500 Min.
<b>Environmental</b>		
Temperature Range		-65°C~+ 165°C/-85°F ~+ 329°F
Corrosion(Salt spray)		MIL-STD-202 Method 101, Condition B
<b>Materials</b>		
Bodies		Brass
Outer Contacts		Brass
Insulators		PTFE Teflon
<b>Plating</b>		
Bodies		Trialloy or silver plated
Center Contact		Silver plated

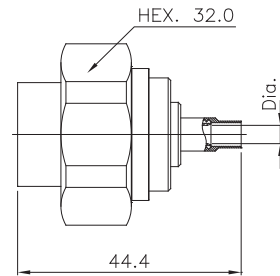
# DIN 7/16



## Straight Plugs

### ■ Crimp Type

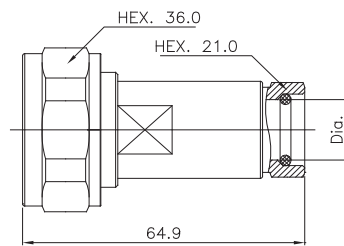
PART NO	Dia.	CABLE
S251-2003-A	Ø3.1	RG 58
S251-2003	Ø7.6	RG 214, RG 393



## Straight Plugs

- Direct solder type
- Reinforce type

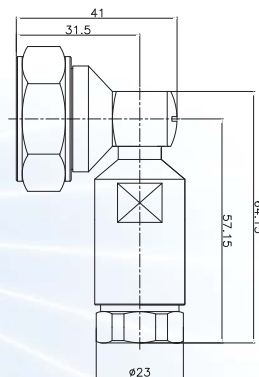
PART NO	Dia.	CABLE
S251-2002	Ø3.7	UT 141
S251-2002-A	Ø6.5	UT 250



## Straight Plugs

### ■ Clamp Type

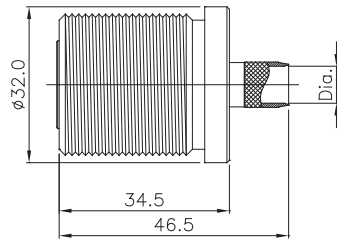
PART NO	Dia.	CABLE
S251-006	Ø14.2	1/2" flexible



## Right Angle Plugs

### ■ Clamp Type

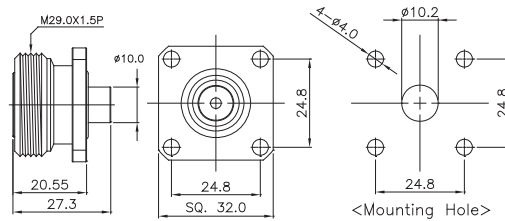
PART NO	Dia.	CABLE
S250-009-B	Ø13.8	1/2" flexible



## Straight Bulkhead Jacks

### ■ Crimp Type

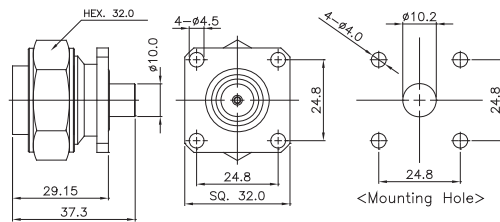
PART NO	Dia.	CABLE
S251-2024	Ø3.1	RG 58
S251-2024-A	Ø7.6	RG 214, RG 393



## Straight 4 Hole Flange Jack

### ■ Pin contact

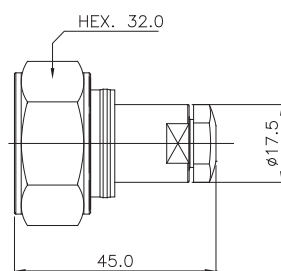
PART NO	IMPED
S251-2033	50 Ω



## Straight 4 Hole Flange Plug

### ■ Pin contact

PART NO	IMPED
S250-020-C	50 Ω



## Plug Terminations

PART NO	IMPED
S251-101	50 Ω