

# DIN 1.6/5.6

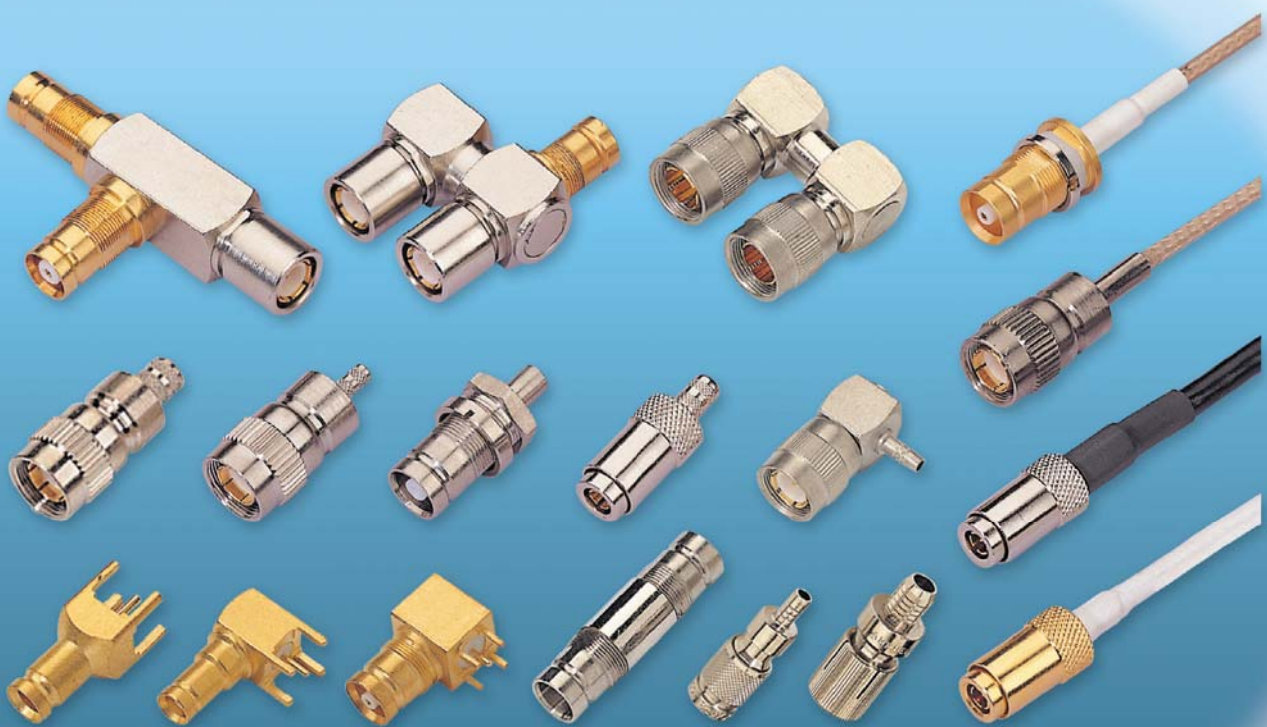
## ► DESCRIPTIONS

The (1.6/5.6) series are through construction and materials especially suited for instruments, where highest reliability is required, for instance in telecommunication systems.

Three different devices are available: screw-on, slide-on coupling where as the sockets are of same design for all systems.

## ► GENERAL

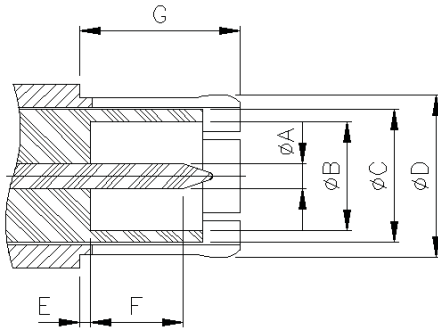
- DIN 47295 (1.6/5.6)



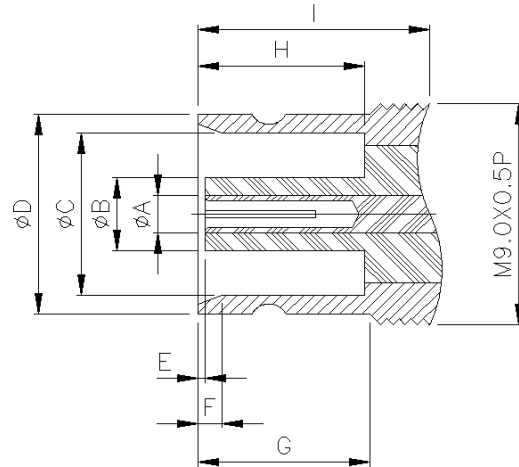
# DIN 1.6/5.6

## ► INTERFACE DIMENSIONS

### PLUG



### JACK



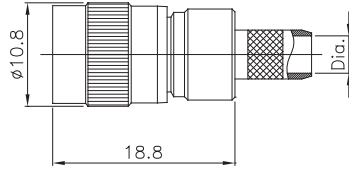
Rep.	PLUG				JACK			
	mm		inch		mm		inch	
	min.	max.	min.	max.	min.	max.	min.	max.
A	1.00 nom.		.039 nom.		1.00 nom.		.039 nom.	
B	4.00 nom.		.157 nom.			3.80		0.150
C	5.60 nom.		.220 nom.		6.60 nom.		.259 nom.	
D	6.60 nom.		.259 nom.		8.25 nom.		.324 nom.	
E	0.15 nom.		.006 nom.		0.25		0.010	
F	4.10 nom.		.161 nom.		1.00 nom.		.039 nom.	
G	6.50 nom.		.256 nom.		7.00 nom.		.275 nom.	
H					6.70		0.264	
I					9.70		0.382	

DIN 1.6/5.6

## ► TECHNICAL DATA

REQUIREMENT		SPECIFICATIONS	
<b>ELECTRICAL CHARACTERISTICS</b>			
Impedance		75 ohm	
Frequency range		1 GHz	
V.S.W.R		≤1.5	
Working voltage		500V/50Hz	
Insertion Loss		Straight	: 0.1 dB max.
		Right angle	: 0.5 dB max.
Insulation resistance		1,000 Mohm min.	
Contact resistance		Initial	After
	Center contact	4.0 mohm	6.0 mohm
	Outer contact	2.0 mohm	3.5 mohm
Max. Contact current (DC)		2.0 A	
Dielectric withstanding voltage		1000V/50Hz	
<b>Mechanical Characteristics</b>			
Engagement force		12 N MAX.	
Separation force		2.2 N MIN.	
Life time		500 matings	
<b>Enviromental Characteristics</b>			
Operating temperature range	Standard	-55°C+125°C	
<b>Materials</b>			
Bodies		Brass or Stainless steel	
Contacts(Female)		Beryllium copper	
Contacts(Male)		Brass	
Insulators		PTFE (Teflon)	
Gasket		Silicone rubber	
<b>Plating</b>			
Bodies		Gold Plated or Nickel Plated	
Center contacts		Gold Plated	

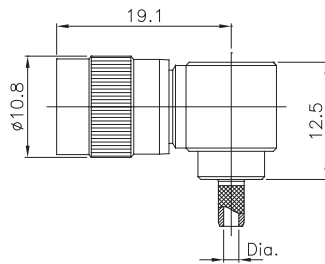
# DIN 1.6/5.6



## Straight Plugs

### ■ Crimp Type

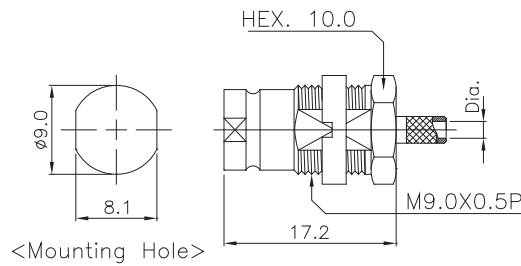
PART NO	Dia.	CABLE
S318-074	Ø1.7	RG 179
S318-077	Ø2.6	2.5C2V / 8218
S318-076	Ø3.9	RG 59



## Right Angle Plugs

### ■ Crimp Type

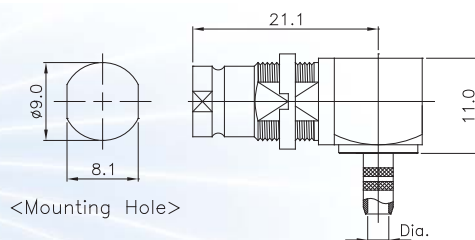
PART NO	Dia.	CABLE
S318-078	Ø1.7	RG 179
S318-079	Ø2.6	2.5C2V / 8218
S318-080	Ø3.9	RG 59



## Straight Bulkhead Jacks

### ■ Crimp Type

PART NO	Dia.	CABLE
S760-027	Ø1.7	RG 179
S760-027-A	Ø2.6	2.5C2V / 8218
S760-027-B	Ø3.9	RG 59



## Right Angle Bulkhead Jack

### ■ Crimp Type

PART NO	Dia.	CABLE
S760-028	Ø1.7	RG 179
S760-028-A	Ø2.6	2.5C2V / 8218
S760-028-B	Ø3.9	RG 59